

Andreas Pflüger

# Astrophysics

für Kontrabassklarinetten (B) und Tonspur



Andreas Pflüger

# Astrophysics

für Kontrabassklarinetten (B) und Tonspur



# Black Hole

Kontrabassklarinette und Tonspur

0'

Flutterzunge

Pos.ord.

*pp* *mf* *f* *p* *pp*

Flutterzunge

Pos.ord.

*pp* *mf* *f* *p* *pp*

20''

*pp* *mf* *mf*

*f* *p*

*pp*

50''

*p* *f* *p* *p* *f*

*p*

Musical staff with notes and slurs, including dynamic markings like *mf* and *f*.

1'16"

Musical staff with notes, slurs, and dynamic markings like *fff* and *mp*. Includes the instruction "gesungen, klingend notiert" (sung, ringing notation).

1'30"

Musical staff with notes, slurs, and dynamic markings like *mf* and *f*. Includes the instruction "Slap tongue" and "mit den Tasten klappern" (clapping with the keys).

Musical staff with notes, slurs, and dynamic markings like *ff* and *mf*. Includes the instruction "mit den Tasten klappern" (clapping with the keys).

Musical staff with notes, slurs, and dynamic markings like *sfz* and *mf*. Includes the instruction "mit den Tasten klappern" (clapping with the keys).

2'00"

Musical staff with notes and dynamic markings like *pp*. Includes the instruction "pos.ord." (position order).

Musical staff with notes, slurs, and dynamic markings like *pp*.

2'30"

Musical staff with notes, slurs, and dynamic markings like *mp*. Includes the instruction "tr" (trill).



# 2. Velapulsar

0"

Musical notation for the 0'' mark, featuring a treble clef and a series of eighth notes with a *pp* dynamic marking.

17"

Musical notation for the 17'' mark, first system, featuring a treble clef and a series of notes with a *p* dynamic marking.

Musical notation for the 17'' mark, second system, featuring a treble clef and a series of notes with a *ff* dynamic marking.

Musical notation for the 17'' mark, third system, featuring a treble clef and a series of notes.

50"

Musical notation for the 50'' mark, first system, featuring a treble clef and a series of notes with a *pp* dynamic marking.

Musical notation for the 50'' mark, second system, featuring a treble clef and a series of notes with a *pp* dynamic marking.

1'10"

Musical notation for the 1'10'' mark, featuring a treble clef and a series of notes with a *ppp* dynamic marking. Includes performance instructions: "mit viel Luft im Ton" and "pos.ord.".



mit viel Luft im Ton ————— pos.ord. ————— mit viel Luft im Ton —————

*PPP* *PP* *PPP*

pos.ord. ————— mit viel Luft im Ton —————

*PP* *PPP*

pos.ord.

*PP*

*f*

2'00"

gliss. ————— Multiphonic ad lib. ————— mit viel Luft im Ton, wie ein Hauch ————— Multiphonics ad lib. —————

*fff* *p* *PPP* *mp* *PPP* *PPP* *mp* *PPP*

mit viel Luft im Ton, wie ein Hauch ————— Multiphonics ad lib. ————— mit viel Luft im Ton, wie ein Hauch —————

*PPP* *mp* *mp* *mp* *PPP*

mit viel Luft im Ton, wie ein Hauch ————— Multiphonics ad lib. ————— mit viel Luft im Ton, wie ein Hauch —————

*PPP* *mf* *mf* *PPP*

Multiphonics ad lib. ————— mit viel Luft im Ton, wie ein Hauch —————

*mf* *mf* *mf* *PPP*

2'48"

slap tongue

Multiphonics ad lib.

*f* *mf* *P* *f* *P* *f*

in Einklang übergehen

mit viel Luft im Ton wie ein Hauch

mit viel Luft im Ton wie ein Hauch

pos.ord.

pos.ord.

Multiphonic ad lib.

pos.ord.

Multiphonic ad lib.

*PP* *mf* *PPP* *PP* *mf*

mit viel Luft im Ton wie ein Hauch

*PPP*

Detailed description: This section of the score spans from 2'48" to 3'36". It consists of five staves of music. The first staff begins with a treble clef and a key signature of one flat. It features a series of notes with accents and slurs, marked with dynamics *f*, *mf*, *P*, *f*, *P*, and *f*. Above the staff, the instruction "slap tongue" is written. To the right, "Multiphonics ad lib." is indicated with a diagram of a staff showing multiple notes on different lines. The second staff continues with a treble clef and a key signature of one flat. It includes a slur over several notes, with the instruction "in Einklang übergehen" above it. Dynamics range from *ff* to *P*. The instruction "mit viel Luft im Ton wie ein Hauch" is written above the staff. A "pos.ord." marking is present. The third staff continues with a treble clef and a key signature of one flat. It features a slur over several notes, with the instruction "mit viel Luft im Ton wie ein Hauch" above it. Dynamics range from *PP* to *mf*. The instruction "Multiphonic ad lib." is written above the staff. The fourth staff continues with a treble clef and a key signature of one flat. It features a slur over several notes, with the instruction "mit viel Luft im Ton wie ein Hauch" above it. Dynamics range from *PPP* to *mf*. The instruction "Multiphonic ad lib." is written above the staff. The fifth staff continues with a treble clef and a key signature of one flat. It features a slur over several notes, with the instruction "mit viel Luft im Ton wie ein Hauch" above it. Dynamics range from *PPP* to *mf*. The instruction "Multiphonic ad lib." is written above the staff.

3'36"

pos.ord. molto dolce

gliss.

*PPP*

*f* *PP* *mf*

mit viel Luft im Ton wie ein Hauch

gliss.

*PPP*

Detailed description: This section of the score spans from 3'36" to the end of the page. It consists of three staves of music. The first staff begins with a treble clef and a key signature of one flat. It features a slur over several notes, with the instruction "pos.ord. molto dolce" above it. Dynamics range from *PPP* to *f*. The instruction "gliss." is written above the staff. The second staff continues with a treble clef and a key signature of one flat. It features a slur over several notes, with the instruction "mit viel Luft im Ton wie ein Hauch" above it. Dynamics range from *PP* to *mf*. The third staff continues with a treble clef and a key signature of one flat. It features a slur over several notes, with the instruction "gliss." above it. Dynamics range from *PPP* to *mf*. The instruction "mit viel Luft im Ton wie ein Hauch" is written above the staff.

4'10"

mit viel Luft im Ton  
wie ein Hauch

pos.ord. *ppp*

mit viel Luft im Ton  
wie ein Hauch

pos.ord.

mit viel Luft im Ton  
wie ein Hauch

pos.ord.

Multiphonics  
ad lib.

*mp*

mit viel Luft im Ton  
wie ein Hauch

*ff*

*ppp*

Detailed description: This section contains three staves of music. The first staff begins with a treble clef, a key signature of one flat, and a common time signature. It starts with a whole note on G2, marked 'pos.ord.' and 'ppp'. This is followed by a half note on A2, then a half note on B2, and finally a half note on C3, all marked 'mit viel Luft im Ton wie ein Hauch'. The second staff continues with a half note on D3, then a half note on E3, and a half note on F3, also marked 'mit viel Luft im Ton wie ein Hauch'. The third staff begins with a half note on G3, then a half note on A3, and a half note on B3, marked 'mit viel Luft im Ton wie ein Hauch'. This is followed by a half note on C4, then a half note on D4, and a half note on E4, marked 'mit viel Luft im Ton wie ein Hauch'. The section concludes with a half note on F4, marked 'mit viel Luft im Ton wie ein Hauch'. A dynamic marking of 'ff' is placed above the first measure of the third staff, and 'ppp' is placed below the first measure. A 'Multiphonics ad lib.' section follows, consisting of a half note on G3, marked 'mp', with a dynamic wedge above it.

4'40"

Stimmlaute

*ppp* *P* *ppp* *P* *ppp* *P* *ppp*

mit viel Luft im Ton  
wie ein Hauch

Stimmlaute

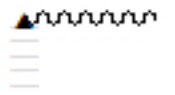
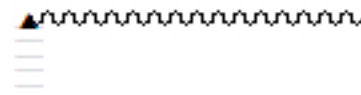
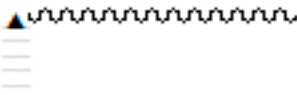
*ppp* *P*

Detailed description: This section contains two staves of music. The first staff is a treble clef with a key signature of one flat and a common time signature. It features a series of 'x' marks on the staff, labeled 'Stimmlaute'. Below the staff, there are four groups of notes, each consisting of a half note on G2, a half note on A2, and a half note on B2. The first group is marked 'ppp', 'P', and 'ppp'. The second group is marked 'ppp', 'P', and 'ppp'. The third group is marked 'ppp', 'P', and 'ppp'. The fourth group is marked 'ppp'. Below the first group, the text 'mit viel Luft im Ton wie ein Hauch' is written. The second staff is a treble clef with a key signature of one flat and a common time signature. It features a series of 'x' marks on the staff, labeled 'Stimmlaute'. Below the staff, there is one group of notes, consisting of a half note on G2, a half note on A2, and a half note on B2, marked 'ppp', 'P', and 'ppp'.

# 3. Strings

10"

sehr hoher, zerbrechlicher Ton

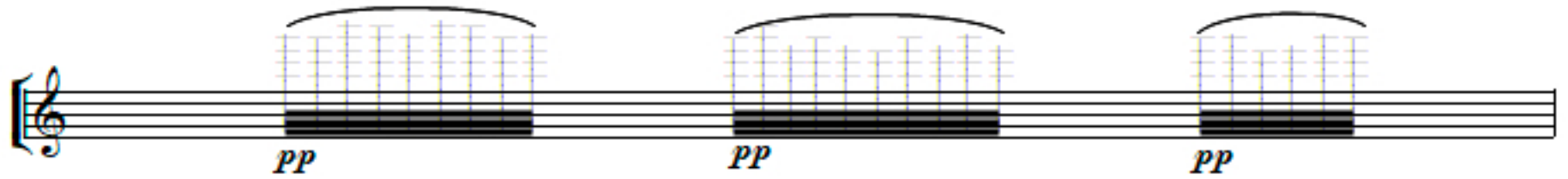


*pp*

*pp*

*pp*

sehr hohe  
leise Tonfolgen



*pp*

*pp*

*pp*



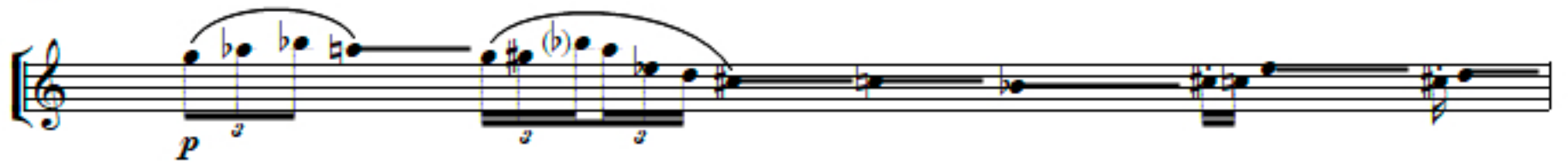
*pp*

*pp*

*pp*

*pp*

25"



*p*



55"

Flatterzunge



*f*

*fff*

*f*

*fff*

*mf*

*ff*

*mf*



*fff*

*f*

*fff*

*f*

*fff*

beliebiges gliss.

1'12"

pos. ord.

Two staves of musical notation. The first staff begins with a treble clef, a key signature of one sharp (F#), and a dynamic marking of *pp*. The music consists of eighth-note patterns with various accidentals (sharps, naturals, flats) and slurs. The second staff continues the melodic line with similar rhythmic and melodic motifs.

1'30"

Two staves of musical notation. The first staff starts with a treble clef, a key signature of one flat (Bb), and a dynamic marking of *pp*. It features eighth-note patterns with slurs. The second staff continues the melodic line with similar rhythmic and melodic motifs.

1'40"

Flatterzunge

Two staves of musical notation. The first staff begins with a treble clef, a key signature of one flat (Bb), and a dynamic marking of *ff*. It features complex rhythmic patterns, including sixteenth-note runs and slurs. The second staff continues the melodic line with similar rhythmic and melodic motifs.

(Flatterzunge)

Two staves of musical notation. The first staff begins with a treble clef, a key signature of one flat (Bb), and a dynamic marking of *pp*. It features complex rhythmic patterns, including sixteenth-note runs and slurs. The second staff continues the melodic line with similar rhythmic and melodic motifs, ending with a dynamic marking of *ppp*.

2'05"

pos. ord.

Two staves of musical notation. The first staff begins with a treble clef, a key signature of one flat (Bb), and a dynamic marking of *ppp*. It features long, sweeping melodic lines with slurs. The second staff continues the melodic line with similar rhythmic and melodic motifs.

2'40"

mit Luft im Ton

PPP

in Multiphonics mit viel Luft im Ton übergehen

3'10"

Multiphonics ad lib. mit viel Luft im Ton

PPP

3'35"

♩ = 100

PP

so lange wiederholen wie der soundtrack dauert

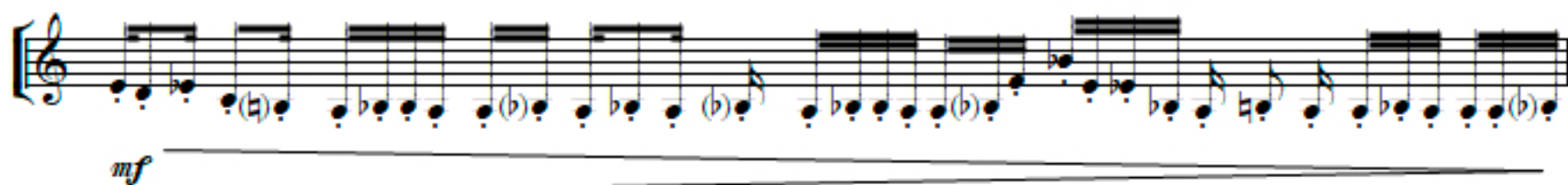
f PPP



1'20"

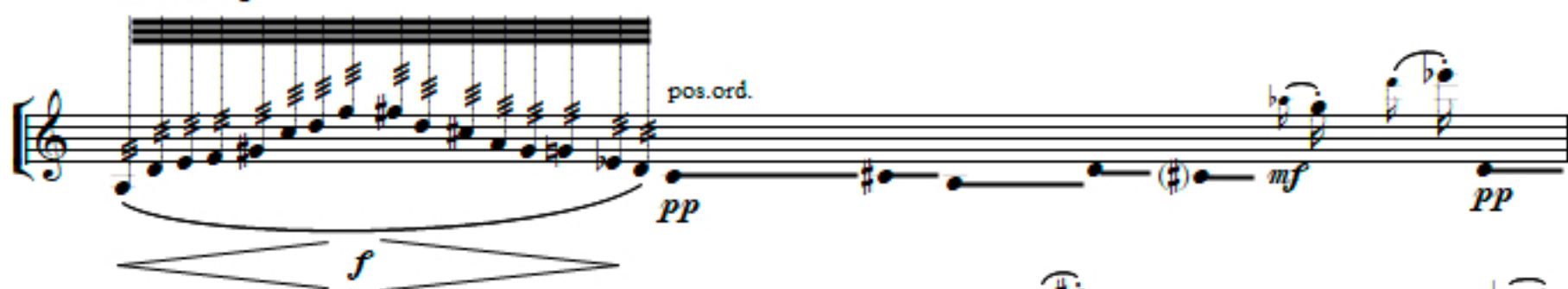
♩ = 124

ca. (im Tempo der Tonspur)



1'45"

Flutterzunge





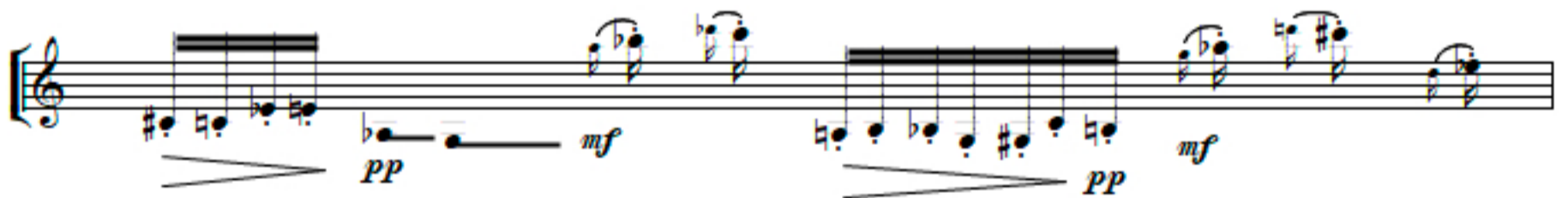
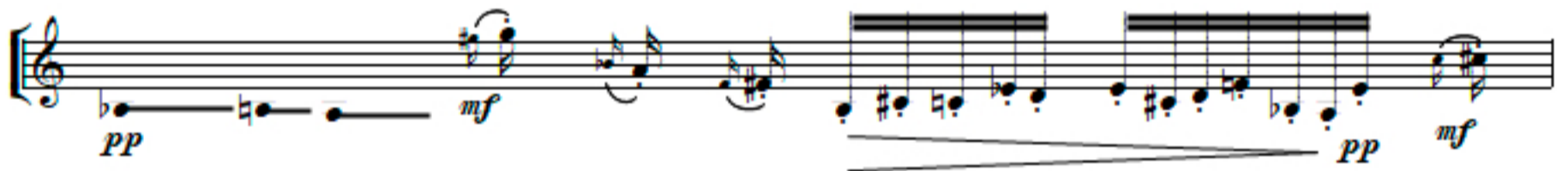
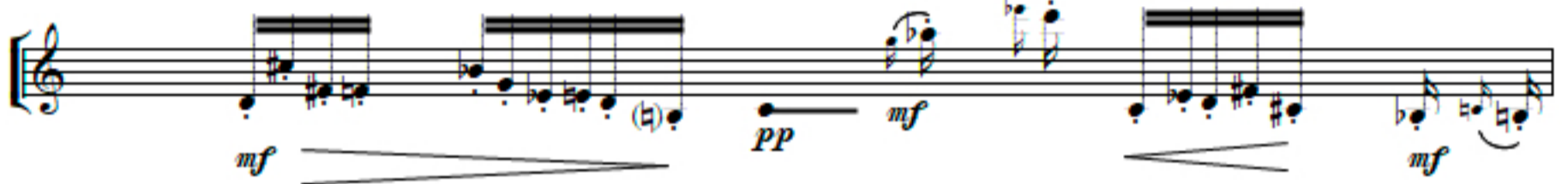
2'30"



2'40"



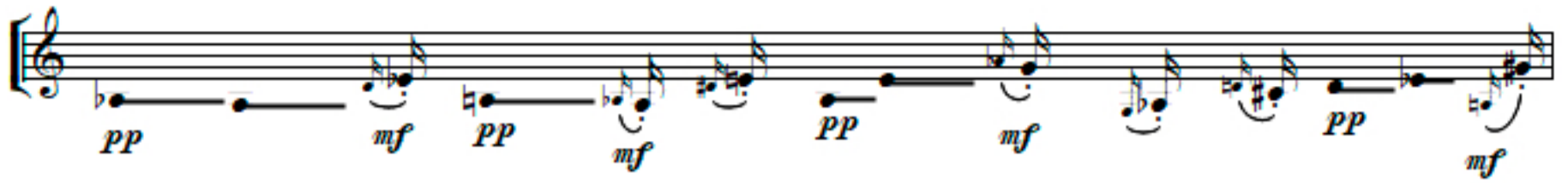
2'55"



3'40"



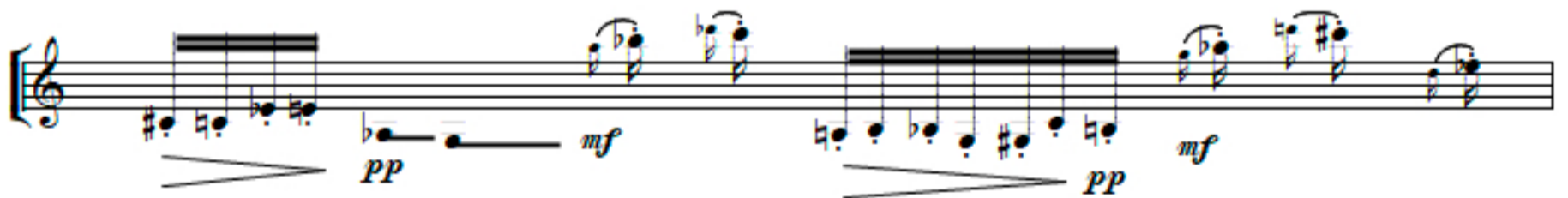
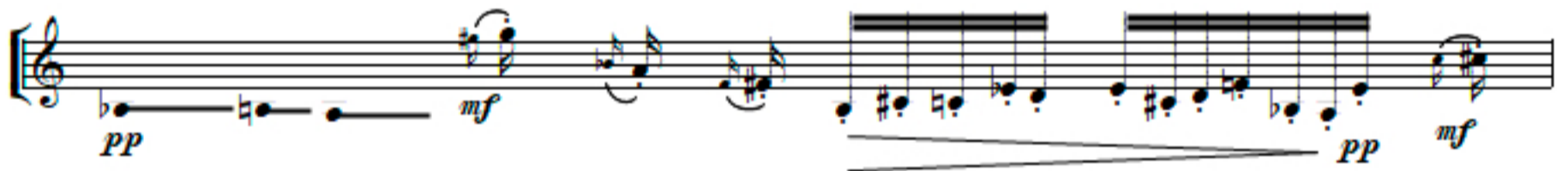
2'30"



2'40"



2'55"



3'40"

